



2021
Concert Season

Performances are under the direction of David Drilling and Jennifer Shenberger.



SUNDAY 7PM HASKELL PARK (FULL BAND)

JUNE 13 - WELCOME BACK!

with vocalist Dr. Paul Varley

JUNE 20 - REFLECTIONS

with vocalist Dr. Marc Schapman

JUNE 27 - THREE'S COMPANY

with Sophie Browning on Clarinet

JULY 4 - PATRIOTIC WEEK

with vocalist David Guebert

JULY 11 - CHOREOGRAPHY & JAZZ

with the Will Schmalbeck Jazz Ensemble

JULY 18 - LET'S GO

with vocalist Sue Parton Stanard

JULY 25 - AN EVENING W/ ERIN

with vocalist Erin Bode

AUGUST 1 - CHILDREN'S CONCERT

with soloist TBA

AUGUST 8 - SO LONG, FAREWELL

with vocalist Robyn Brandon

THURSDAY 8PM RIVERVIEW PARK GAZEBO

JUNE 10 - BRASS QUINTET

JUNE 17 - WOODWIND QUINTET

JUNE 24 - JAZZ ENSEMBLE

JULY 1 - BRASS QUINTET

JULY 8 - GOSPEL ENSEMBLE

JULY 15 - AUGUST 5 IS FULL BAND

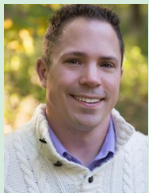
These concerts are open to the public and completely free. They are held outside, so grab a picnic blanket or your lawn chairs, and head on over to the park where you can kick-back and relax to some great music.

We are very excited to let you know the full band will return to perform at Riverview Park in the Gazebo on Thursdays starting July 15th. Musicians scheduled to perform at Haskell Park on Sundays will also perform at Riverview Park.

Check us out on Facebook!



Dr. Paul Varley



Dr. Marc Schapman



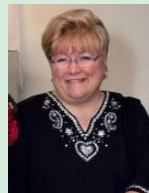
Sophie Browning



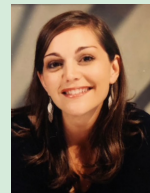
David Guebert



Gospel Choir



Sue Parton Stanard



Erin Bode



Will Schmalbeck



Robyn Brandon