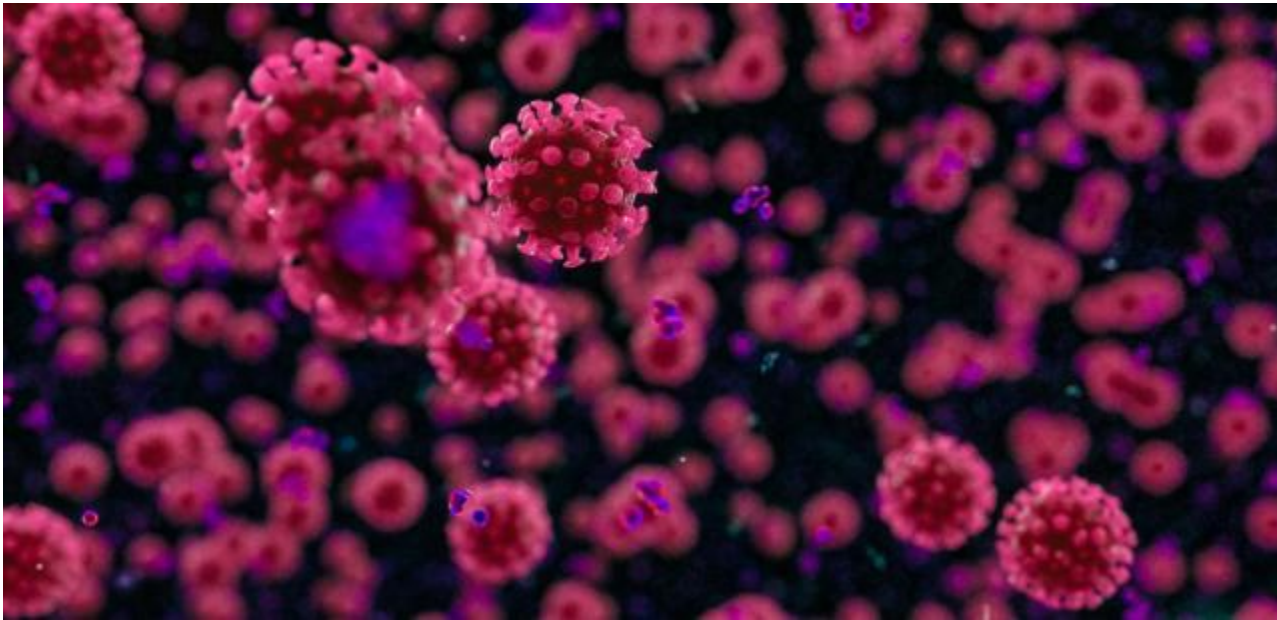


SIHF Healthcare Adds COVID-19 Test Collection Sites in Granite City and Belleville

by Dan Brannan, Content Director
April 27 2020 9:26 AM



SPRINGFIELD – In cooperation with the State of Illinois, state and local elected officials, and Touchette Regional Hospital, SIHF Healthcare announced two additional COVID-19 test collection sites in the region. One of the new locations will be in Granite City and the other in Belleville.

Screening phone lines are open from 8:30 a.m. to 4 p.m. Monday through Friday at (618) 646-2596. The screening by a SIHF provider will involve questions about symptoms, possible exposure, age, work environment and underlying health conditions. If determined to meet the testing requirements as prescribed by IDPH and CDC, the caller would be given a time window to arrive at one of the three collection sites.

Opening on Thursday, April 23, will be a collection site at SIHF Healthcare, 7210 West Main St., Belleville. Collections will take place Monday through Friday between 11:30 a.m. – 3:30 p.m.

Opening on Friday, April 24, will be a collection site at SIHF Healthcare, 2166 Madison Ave., Granite City. Collections will take place Monday through Friday between 11:30 a.m. – 3:30 p.m.

If the caller did not meet collection requirements, they will be provided information about self-isolation and staying home unless symptoms worsen.

All patients are eligible for screening at (618) 646-2596, regardless of their ability to pay. There will be no charge to patients for testing. If the patient has insurance, that information will be gathered during the phone call; however, there will be no cost to the patient. Results should be available in approximately 24 hours.

The East St. Louis collection site is open Monday – Friday from 12:00 – 4:00 p.m.